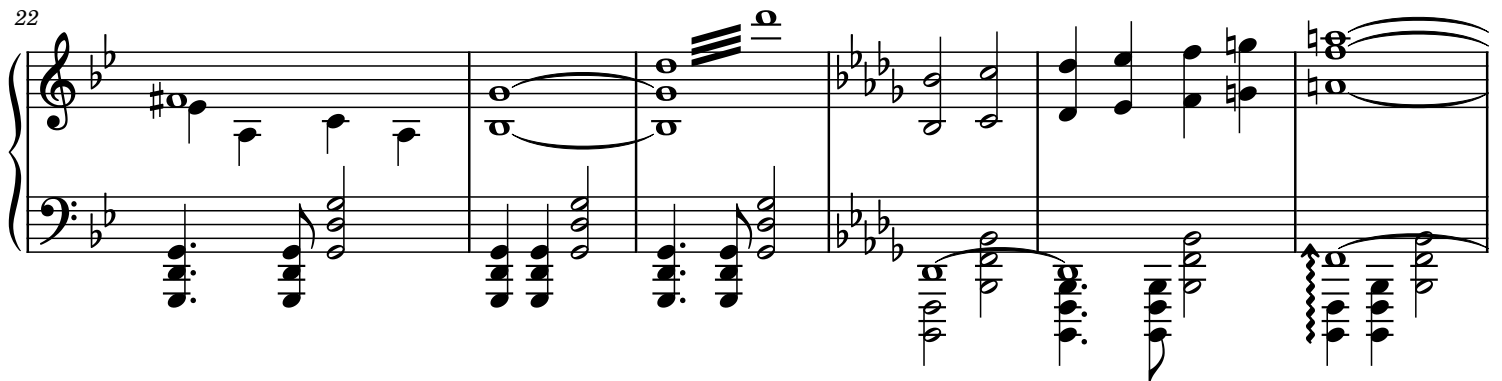
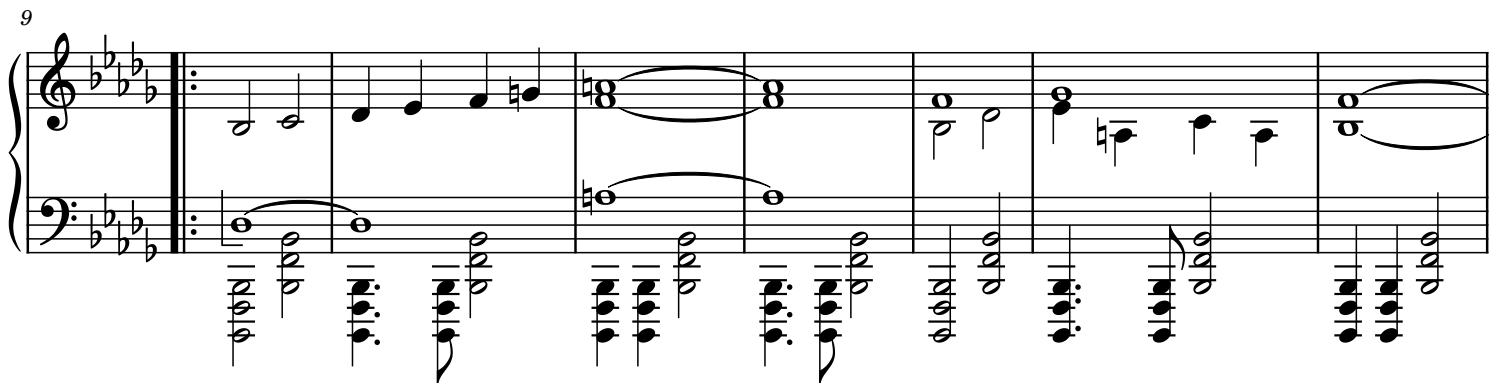
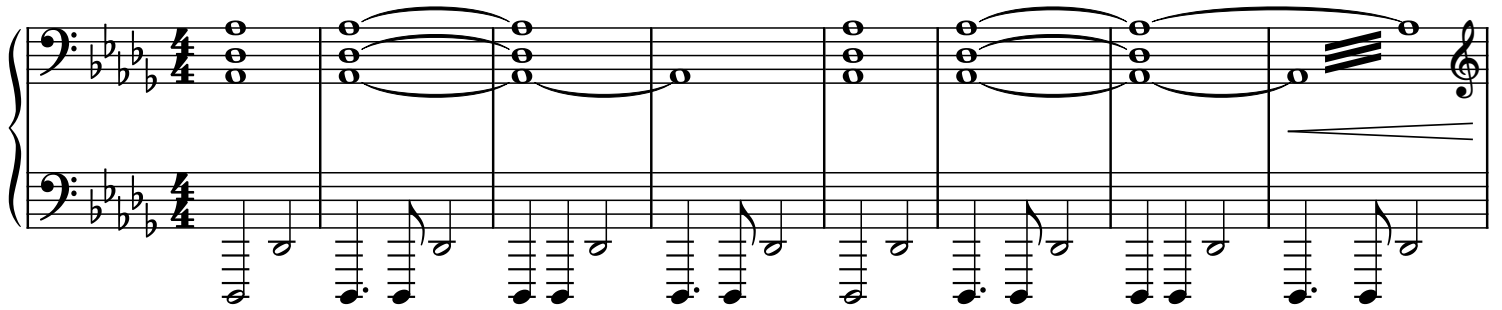


Shinra's Theme

from "FF VII Remake"

Shotaro Shima
arr. Mark Andrews



28

System 1 (measures 28-34) features a piano introduction in B-flat major. The right hand plays a series of chords and single notes, while the left hand provides a steady accompaniment of eighth notes. A repeat sign is present at the end of the system.

35

System 2 (measures 35-40) continues the piano introduction. The right hand features a melodic line with a repeat sign, and the left hand maintains the eighth-note accompaniment.

41

System 3 (measures 41-47) shows the piano introduction continuing. The right hand has a melodic line with a repeat sign, and the left hand continues the eighth-note accompaniment.

48

System 4 (measures 48-54) continues the piano introduction. The right hand has a melodic line with a repeat sign, and the left hand continues the eighth-note accompaniment.

55

System 5 (measures 55-60) concludes the piano introduction. The right hand has a melodic line with a repeat sign, and the left hand continues the eighth-note accompaniment.